

Series 52 Modular Mixing Console

52/MX



www.dhd-audio.com

DHD.audio

Digital Broadcast Technology

Made in Germany

Exceeding your Expectations

4-Faders for DJs and Journalists

All features, small footprint. Especially non-technical users have full control without too much complexity.



12 Faders for On Air Engineers

Just what you need – the mixer for standard studios or small OB vans. It is straightforward to use, self-explanatory and with a comfortable number of faders.



Control and Talkback Box

No faders, but enough buttons for monitoring, outside line control and talkback.

Connect this box with a single CAT5 cable to your DSP core if you need “just a few buttons more and a speaker”.



24 Faders for Production, Live Mix and Control Rooms

Main control, OB van or studio – it is easy to create your custom console.

All fader strips provide many control elements for quick direct access, TFT touch screens show signal levels and settings at a glance – both is essential for mixing live.

The central section provides all features you need for monitoring, talkback and control – including its own TFT.



Exploring the Features

Modularity Redefined

The 52/MX takes audio mixing to a totally new level in flexibility. There are many different control modules available – just pick what you need for your application. They fit all together seamlessly and give you the control surface you want. No matter if you need a mixer for small editing suite, a live DJ desk, an OB van or even a large scale main control room console – it is easy to tailor the mixer to meet your requirements.



All control modules are connected via standard CAT 5/6 cables using Power over Ethernet (PoE). This gives you the freedom to place modules freely in the furniture without worrying about cable lengths. That way, you build the mixer according to the way you work, not the other way round. Add the advanced interface capabilities of the TFT multi-touch screens and you get a truly flexible audio mixer.



Flexibility for your Application

The Series 52 is not just hardware – the real power is the configuration. With an easy to use Windows software, you can configure the behaviour of the system to match your application. If things change later on, it is no problem to adapt your installation. This is especially useful if a studio needs to support new or changing workflows in the future.

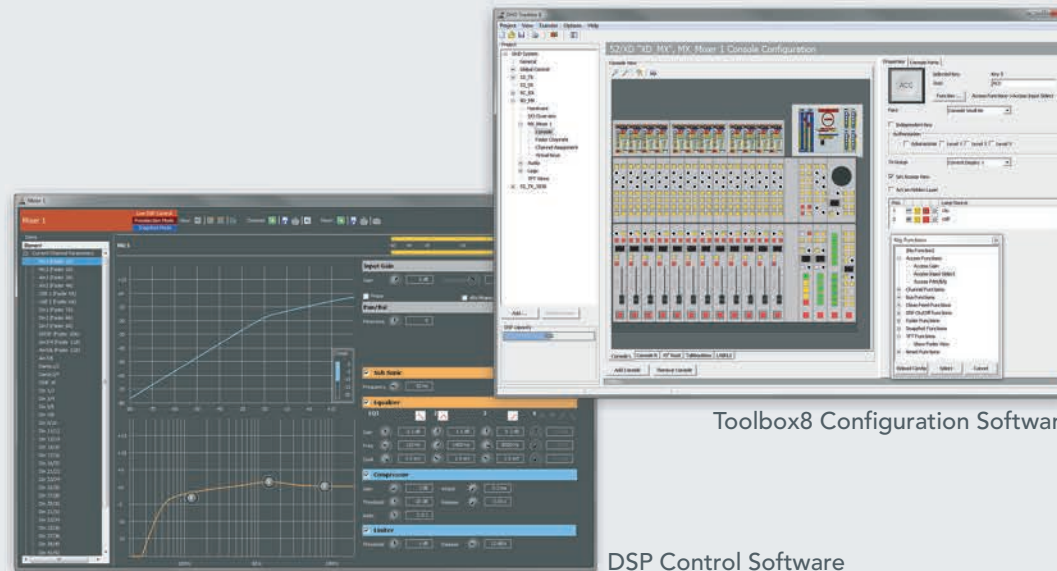


Fitting your Installation

Configuration made easy

A 52/MX system has three main parts: The DSP core with its audio interface modules and its processing power for audio and control signals, the control modules providing the user interface and the software that makes it all work.

To get a 52/MX system up and running, it is configured using the Toolbox8 software. This configuration process is typically done by DHD or your system integrator and implements your requirements into the system. This configuration is what makes your system work. However, if you need to change it later on, just use the Toolbox8 software again and you are done.



Made for Broadcast

The standard system can be enhanced by features which are demanded in many broadcast environments:

- Automix
- 5.1 surround processing
- Delay for each fader channel
- Loudness meters which are shown on the TFT Touch Displays

You can also use the DHD PC Software for Routing or Remote Control of your console.

TFT Touch Screen in Control

The TFT touch screen is a key element for flexible and direct control of the Series 52. It performs well when mounted in different places:

On top of fader or control modules, stand alone as a 52/TX on your desk, flat or slightly lifted in the furniture or even upright in a rack unit. Using the configuration software, you can put many different functions into the TFT.



Full Features – Rack Mounted

Mixer control modules in a rack? Use the 52 Series Q-Panel – 1 U high, it gives a solid housing for the modules you need to control monitoring, talkback, routers, etc. Pick the modules you want, find a free slot in a rack and your problem is solved. Whether you use the Q-Panel stand alone or as part of a larger setup is up to you. In any case, the modules are configured the same way – using the Toolbox8 software.



DSP power as required

The DSP Core, Heart of the System



52/XC2 Core (rear view)



52/XD2 Core (rear view)

The signal processing core of the 52/MX is contained in a compact, low power 1 U module. DSP cores from the 52/XC2 or 52/XD2 product lines can be used. This specialised, rock solid hardware does all the audio and logic processing in the system.

The new Core modules provide enough processing power for even the most demanding applications. If necessary, it can handle an audio matrix of 8700x7400 signals as a router and up to 64 fully processed faders at the same time.

Our Core systems work without hard discs or batteries, and there is no PC inside. All I/O modules, Concentrators and control surfaces are fanless. This allows silent studio operation and reduces maintenance to a minimum.

Connectors for audio and control signals are available as XLR-I/O modules with half 19-inch width and 1 U height. You can choose the matching devices for your application and connect them to each other using CAT 5/6 cables.

There are modules available for interfacing AES67 or Dante™ AoIP streams, MADI, analogue and digital audio. All control modules and TFT Touch Displays use Ethernet to communicate with the Core module.

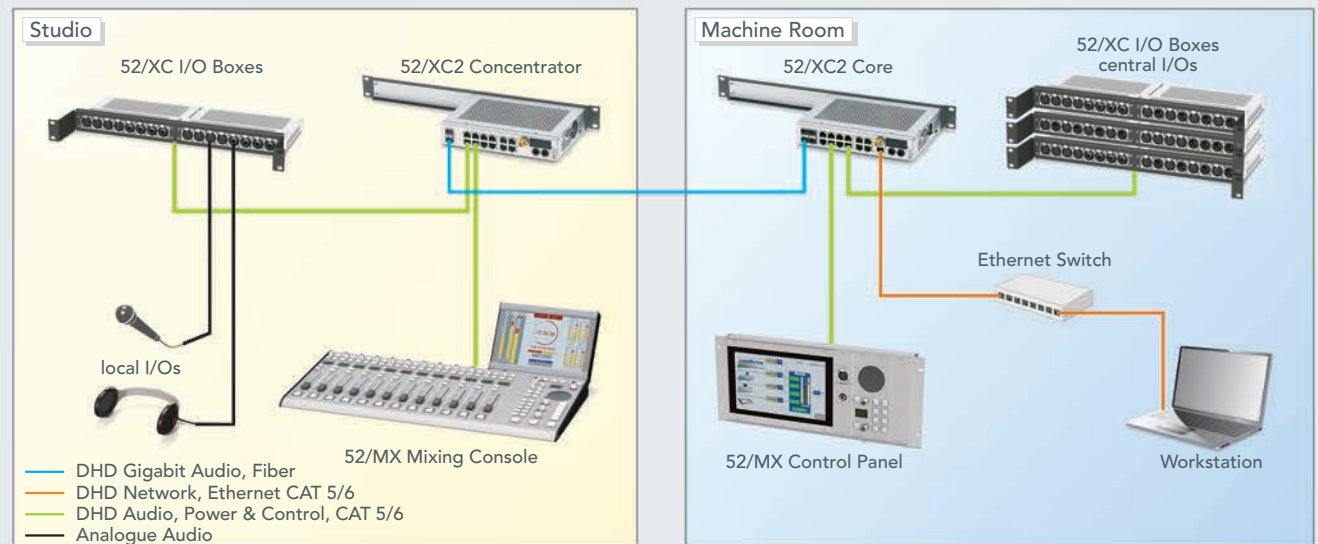
Systems from 3rd parties can use Ember+ via Ethernet, a serial connection or GPIO to interface with Series 52 mixing consoles.

Made for a Distributed System

The 52/XC2 Core provides 12 APC-Ports. These special RJ45-ports connect control modules and I/O boxes to the Core. This connection is made with standard CAT cables, which carry Audio, Power, and Control signals in the same cable – hence the name APC.

This way, your setup benefits from standard CAT cabling infrastructure and allows you to place I/O boxes and control modules where they are needed.

If you need more than 12 APC ports, you can extend the 52/XC2 Core with up to eight 52/XC2 Concentrators. Each of these modules provides 12 additional APC ports and is connected to the 52/XC2 Core with a fiber optics cable. Of course, all audio and control data in the system is available at all APC ports.



Example of a distributed installation with studio and machine room.

Real Modularity

Specifications and design in this document are for information only and subject to change without notification.

version 2016-07-27



52-4304
TFT Encoder Module



52-4306
TFT Encoder Module



52-4516
Pushbutton Module



52-4505A
Pushbutton Module



52-4592B
Mic/Headphone Plate



52-4305B
Potentiometer Module



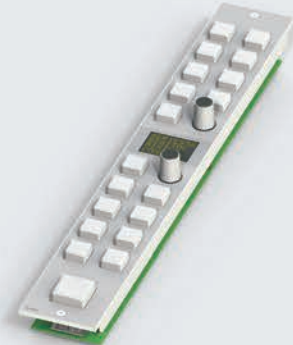
52-4527
Loudspeaker Module



52-4402
Control Module



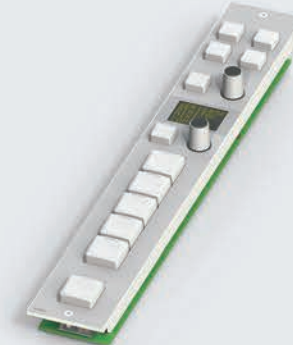
52-4411
Pushbutton Module



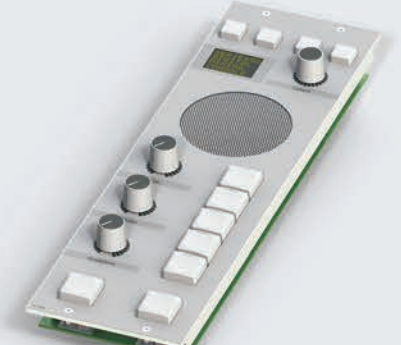
52-4412
Control Module



52-4414
TFT Control Module



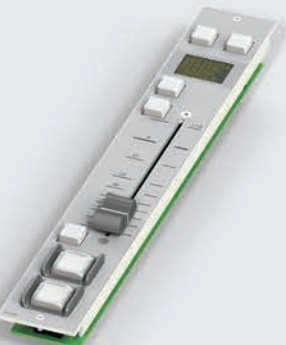
52-4422
Control Module



52-4424
Loudspeaker Module



52-4230 Fader Module



52-4260 Fader Module

52-4231 Fader Module (Motor) 52-4261 Fader Module (Motor)



52-4510
TFT Display, multitouch, IPS, 10.1"
for housing



52-4010
TFT Display, multitouch, IPS, 10.1"



52-4018
TFT Display, multitouch, IPS, 7"

Find out more at www.dhd.audio

- Mixing
- Routing
- Controlling
- Networking
- Switching